

Original BMW Parts

www.bmw.com



Sheer
Driving Pleasure

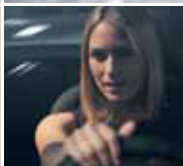
YOUR BENEFITS AT A GLANCE:

SUSTAINABILITY



- High performance capacity.
- Optimal recyclability.
- Optimal protection against acid leaks and explosions.

SAFETY



- Great robustness to corrosion and internal short circuits.
- High and low temperature stability.

VALUERETENTION



- Maintenance-free.
- Long availability, even after periods of immobilisation and storage.
- Long service life.

FULL POWER FOR YOUR BMW.

**ORIGINAL BMW BATTERIES
WITH CALCIUM TECHNOLOGY.**

Insist on Original BMW Parts.

Decisions based solely on price tend to overlook essential criteria like quality, operational reliability, precision fitting and useful lives.

Original BMW Parts are optimised to your BMW model and must fulfil the same quality standards as our BMW vehicles.

The fitted precision and high quality of each and every part ensure the harmonious interaction between the vehicle system's functionality and operating principle. Maintain your BMW in its original condition with Original BMW Parts.

To make sure your BMW stays a BMW.

For further details see: www.bmw.com/parts

DID YOU KNOW?

The battery is the most important power supply when the engine is starting and stores the energy that the alternator produces when the vehicle is moving. This electrical energy is transferred when needed to the consumers and control units like starter motor, lighting, etc.

In city traffic and on short routes the vehicle electrical system can consume more power than the alternator can supply. In these times of increasing electronics in the vehicle, the importance of battery performance too grows in equal measure.

The performance capacity of batteries drops sharply at low temperatures. Yet it is the cold season when a lot of energy is needed particularly for light, blowers, heating, etc. Also **great heat and long immobilisation periods** induce self-discharging and shorten the battery's service life.

If they are to fulfil the high BMW quality requirements, Original BMW Batteries must pass **gruelling field and laboratory tests as well as constant quality control.** The batteries are subject to constant quality controls according to BMW standards during production which actually **exceed EN and DIN manufacturing standards.**

WHAT DOES CALCIUM TECHNOLOGY MEAN?



Conventional hybrid batteries consist of a negative lead-calcium grid and a positive lead-antimony grid. A calcium alloy would have been beneficial for the positive grid too, but its greater susceptibility to corrosion made this impossible in the past.

In a special process, BMW has succeeded in providing both poles with the same physical properties. A special silver additive has made it possible to develop a grid for the positive plate that combines the advantages of a calcium alloy with high resistance to corrosion.



ORIGINAL BMW BATTERIES...

... are maintenance-free thanks to their low water consumption.

... exhibit convincingly low self-discharging levels for immediate availability even after long periods of immobilisation and storage.

... provide a high performance capacity thanks to their good charge acceptance and cold-starting performance.

... have a longer service life than conventional hybrid batteries.
The optimised cyclic load stability benefits particularly vehicles with a high electrical power throughput.

... are particularly robust, thanks to ultra quality alloys to corrosion and internal short circuits.

... are particularly stable at high and low temperatures.

... provide the optimal protection against acid leaks and explosions with their special cover design and against short circuits thanks to a special complex welding method.

... can be optimally recycled owing to their robust, shockproof housing of polypropylene.

... prevents hydrogen gas explosions, by drawing these gases through a central degassing system.